


# UL/FM AWWA Resilient Wedge OS & Y Gate Valve, Flanged x Grooved

## Fig. 35FGW

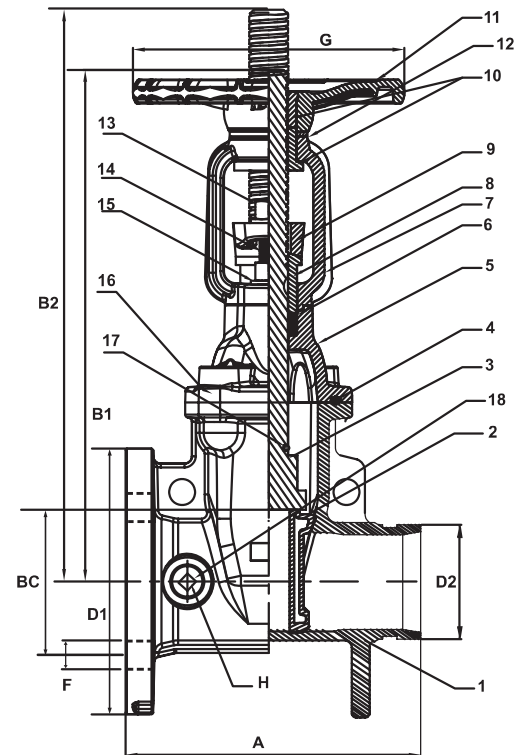


### Design Features

- 300 lb. non-shock cold working pressure
- Ductile iron body and bonnet
- 304 Stainless steel stem
- Wax encapsulated stainless cap screws
- Fusion bonded epoxy coating AWWA C550
- Meets AWWA C515
- Certified to ANSI/NSF 61 and 372 (Lead Free)
- UL Listed / FM Approved up to 12"
- Grooved stem for tamper switch
- Tapped and plugged for by-pass with additional bosses
-  Brand for full traceability

### Parts & Materials

No.	Part	Material
1	Body	Ductile Iron Gr. A536 65 / 45 / 12
2	Wedge	Ductile Iron Gr. A536 65 / 45 / 12; EPDM
3	Stem	304 Stainless Steel
4	Bonnet Gasket	EPDM
5	Bonnet	Ductile Iron Gr. A536 65 / 45 / 12
6	Stem Packing	EPDM
7	Yoke	Ductile Iron Gr. A536 65 / 45 / 12
8	Packing Gland	Brass ASTM B124 C37700
9	Gland Flange	Ductile Iron A536 65 / 45 / 12
10	Yoke Nut	Brass ASTM B124 C37700
11	Handwheel	Ductile Iron Gr. A536 65 / 45 / 12
12	Washer	Brass ASTM B124 C37700
13	Gland Nut	304 Stainless Steel
14	Stud	304 Stainless Steel
15	Flat Washer	304 Stainless Steel
16	Bonnet Bolt	304 Stainless Steel
17	O-Ring	EPDM
18	Plug	Lead Free Bronze B584 / C89833



### Dimensions

Size	Part Number	Weight	A	B1	B2	BC*	D1	D2	F	G	H
In		Lb	In	In	In	In	In	In	In	In	In
4	017135FGW040	61	9.00	18.54	22.56	7.50	9.00	4.50	8 - 0.75	10.00	½-14NPT
6	017135FGW060	104	10.50	23.66	29.72	9.50	11.00	6.625	8 - 0.88	12.00	¾-14NPT
8	017135FGW080	181	11.50	30.47	38.38	11.75	13.50	8.625	8 - 0.88	15.75	¾-14NPT

\*Bolt Circle