



JOB NAME:	CONTRACTOR:
JOB LOCATION:	APPROVAL:
ENGINEER:	CONTRACTOR P.O.:
APPROVAL:	REPRESENTATIVE:

ME97T150-00*

97T150 3-WAY T-PORT STAINLESS STEEL, ANSI 150 FLANGED, BLOCK BODY, FULL PORT BALL VALVE WITH VALBIA METAL ELECTRIC ACTUATOR

SIZES 1/2" TO 6"

ME97L150-00*

97L150 3-WAY L-PORT STAINLESS STEEL, ANSI 150 FLANGED, BLOCK BODY, FULL PORT BALL VALVE WITH VALBIA METAL ELECTRIC ACTUATOR

SIZES 1/2" TO 6"

*001 12V AC/DC	*002 24V AC/DC	*003 100-240V AC
01 BATTERY BACKUP	*02* POSITIONER	*04* BATTERY BACKUP W POSITIONER

SPECIFICATIONS

ME97T150 T port and ME97L150 L port packages feature the 97T150 and 97L150 block style, full port, ANSI Class 150 stainless steel ball valves, with RTFE seats, multiple chevron style stem packing, and a grounded ball & stem. In addition the 97T150/97L150 are ISO5211 with a square stem for direct mount capability.

The Valbia VBM series metal actuator housing is made from die cast aluminum, and standardly features dual motors, two extra limit switches, a heater and thermostat, a torque limiter, dual ISO patterns, female star drive, a high-profile dome indicator, 1/2" conduit connections, and a 75% duty cycle motor. The actuator is NEMA 4 rated, and options include positioning boards, battery backups, or a combination of the two.

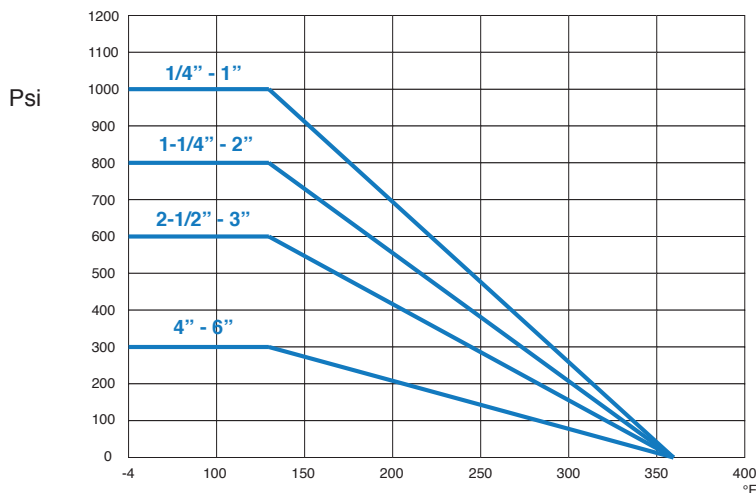
ACTUATOR FEATURES

- Dual Voltages
- 24V AC/DC and 100-240V AC
- ISO 5211 dual patterns
- 75% Duty Cycle
- High-Strength, Die Cast Aluminum Powder Coated Housing
- Temperature Range -4°F to 131°F
- NEMA 4 Housing
- Two Auxiliary Switches Standard
- Torque limiter standard
- 1/2" Conduit connections

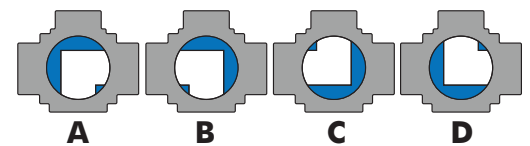
VALVE FEATURES

- Stainless Steel, ANSI class 150 flanged
- Full port, sizes 1/2" to 6"
- Pressure rating 1/4" to 1" - 1000 psi, 1-1/4" to 2" - 800 psi, 2-1/2" to 3" - 600 psi, 4" to 6" - 300 psi
- Temperature range -20°F to 450°F
- Blow-out proof stem
- R.P.T.F.E. seats & seals
- Grounded Ball & Stem
- Multiple Chevron style stem packing
- 100% tested
- All stainless steel external components
- ISO 5211 mounting pad with square stem

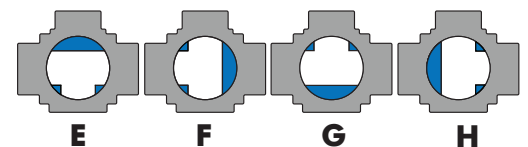
PRESSURE - TEMPERATURE CHART FOR SERIES 97T150 & 97L150



PORT CONFIGURATIONS

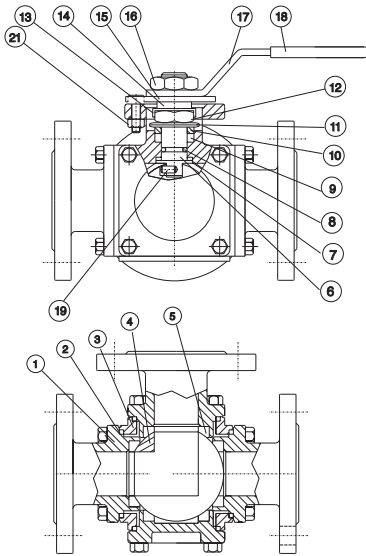


L-PORT



T-PORT

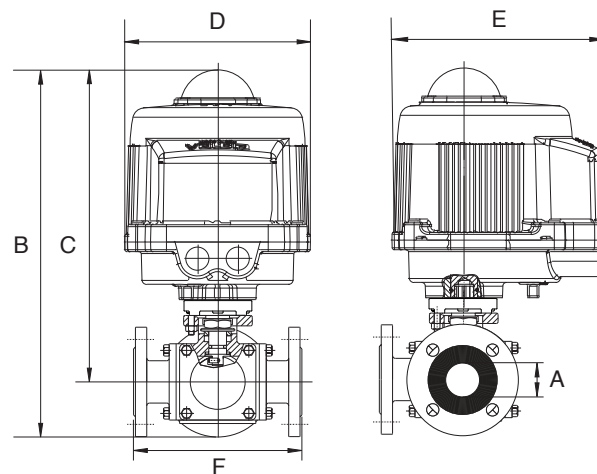
BILL OF MATERIALS FOR 97T150 & 97L150



N POS	PART NAME	MATERIAL	N PCS
1	FLANGED ENDS	A351 CF8M	3
2	GASKET	P.T.F.E.	4
3	BODY	A351 CF8M	1
4	BALL	SS 316	1
5	BALL SEATS	P.T.F.E.	4
6	THRUST WASHER	R.P.T.F.E.	1
7	STEM	SS 316	1
8	O-RING	FKM (Viton®)	1
9	STEM PACKING	P.T.F.E.	1
10	GLAND	SS 304	2
11	DISC WASHER	SS 301	1

N POS	PART NAME	MATERIAL	N PCS
12	STEM NUT	SS 304	1
13	NUT STOP	SS 304	1
14	SPACE WASHER	SS 304	1
15	STOPPER PLATE	SS 304	1
16	HANDLE NUT	SS 304	1
17	HANDLE	SS 304	1
18	HANDLE SLEEVE	VINYL	1
19	INSERT PIN	SS 304	1
20	STOP PIN	SS 316	1
21	STOP PIN NUT	SS 304	1
22	BOLTS	SS 304	8

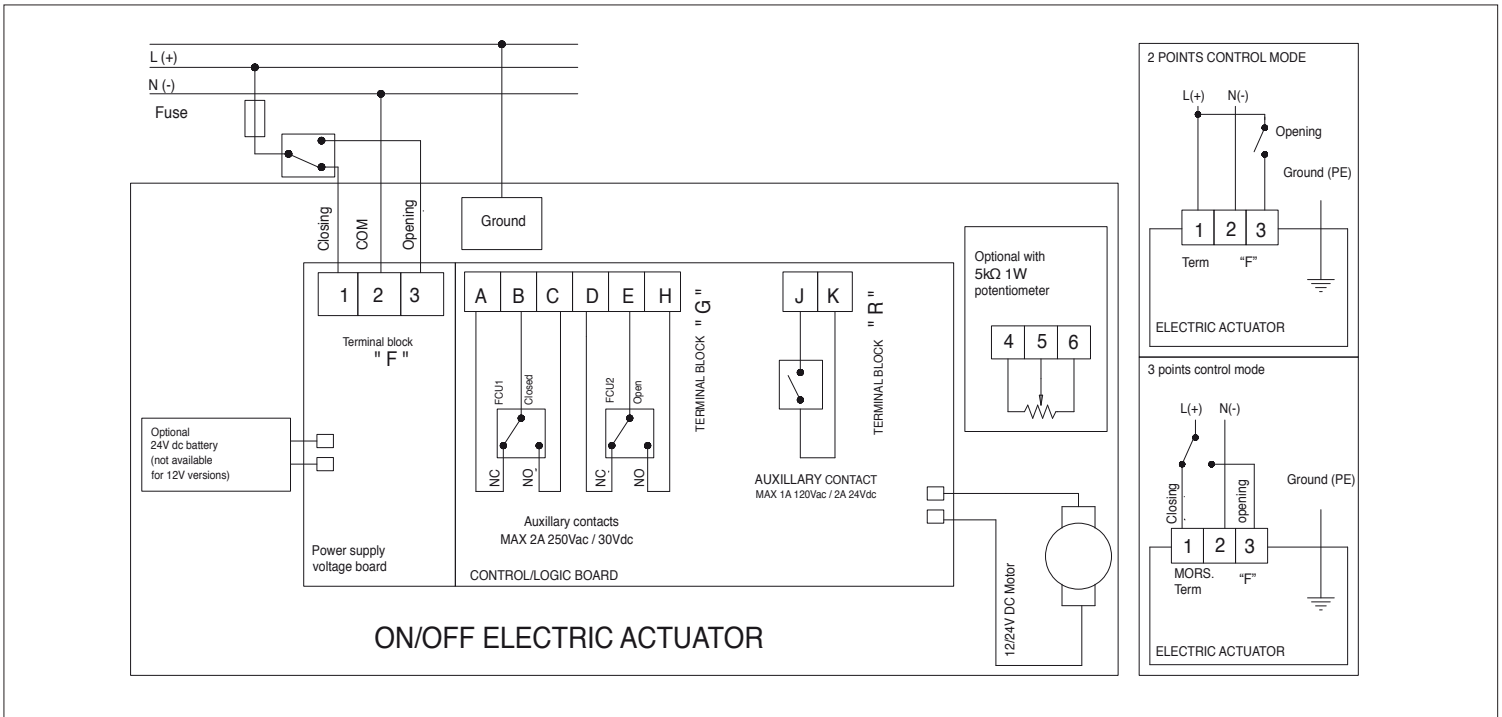
DIMENSIONS



Size	1/2"	3/4"	1"	1-1/2"	2"	2-1/2"	3"	4"	6"
A	0.59	0.79	0.98	1.50	1.97	2.44	2.99	3.78	5.91
B	20.99	22.28	25.12	28.73	31.63	35.70	36.14	41.64	46.70
C	13.81	14.40	16.14	18.34	19.68	21.53	21.73	24.23	26.53
D	6.34	6.34	6.93	10.63	10.63	10.83	10.83	10.83	10.83
E	7.36	7.36	7.76	10.47	10.47	10.98	10.98	10.98	10.98
F	5.98	6.57	7.48	8.66	9.96	11.81	12.01	14.51	16.81
Act.	VB030M	VB030M	VB060M	VB110M	VB110M	VB270M	VB270M	VB350M	VB350M

ON/OFF WIRING DIAGRAM - VB030M -VB190M

12V AC/DC, 24V AC/DC & 100-240VAC



POSITIONER WIRING DIAGRAM - VB030M -VB190M

12V AC/DC, 24V AC/DC & 100-240VAC

