



<b>JOB NAME:</b>	<b>CONTRACTOR:</b>
<b>JOB LOCATION:</b>	<b>APPROVAL:</b>
<b>ENGINEER:</b>	<b>CONTRACTOR P.O.:</b>
<b>APPROVAL:</b>	<b>REPRESENTATIVE:</b>

## MEN500N

**RUBBER-LINED DIRECT MOUNT, WAFER STYLE BUTTERFLY VALVE WITH EPDM SEATS AND NYLON DISC WITH VALBIA METAL ELECTRIC ACTUATOR**  
**SIZES 2" TO 12"**

**ME530N - VITON SEATS**

## MEN500S

**RUBBER-LINED DIRECT MOUNT, WAFER STYLE BUTTERFLY VALVE WITH EPDM SEATS AND STAINLESS STEEL DISC WITH VALBIA METAL ELECTRIC ACTUATOR**  
**SIZES 1-1/2" TO 12"**

**ME530S - VITON SEATS**

**ME540S - BUNA SEATS**

<b>*001</b> 12V AC/DC	<b>*002</b> 24V AC/DC	<b>*003</b> 100-240V AC
<b>*01*</b> BATTERY BACKUP	<b>*02*</b> POSITIONER	<b>*04*</b> BATTERY BACKUP W POSITIONER

### SPECIFICATIONS

Bonomi North America series MEN500S and MEN500N packages, include cast iron, epoxy coated, wafer style, resilient EPDM seat butterfly valves in sizes 1 1/2"-12" are NSF/ANSI61/372 certified.

This series shall offer a dual stem design and ISO 5211/DIN3337 direct mounting for high cycle automation capabilities.

In addition, the MEN500S-EN500N series features a phenolic-backed cartridge seat design which offers a 250CWP maximum pressure rating, dead-end service to 100 PSI, and conforms to ANSI B16.1 and ANSI B16.5

The MEN500 series also includes a rugged aluminum polyester powder coated metal housing NEMA 4 electric actuator, with standard features such as 2 extra limit switches, heater and thermostat, torque limiter, dual voltages, bubble type position indicator and a 75% duty cycle motor.

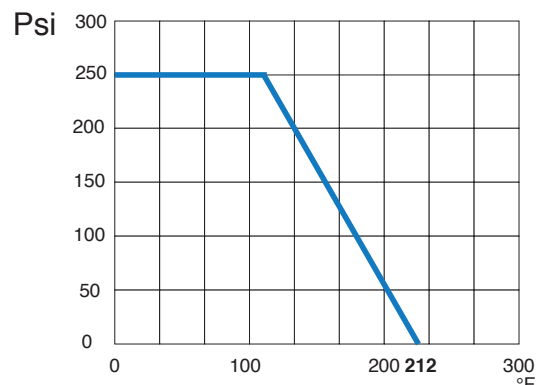
### ACTUATOR FEATURES

- Dual Voltages
- CSA, UL approved
- 24V AC/DC and 100-240V AC
- ISO 5211 dual patterns
- 75% Duty Cycle
- High-Strength, Die Cast Aluminum Powder Coated Housing
- Temperature Range -4°F to 131°F
- NEMA 4 Housing
- Two Auxiliary Switches Standard
- Torque limiter standard
- 1/2" Conduit connections

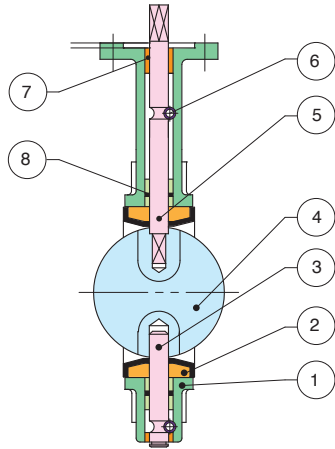
### VALVE FEATURES

- ISO 5211 Direct Mount/Square Stem
- Epoxy coated Ductile Iron Wafer body
- EPDM resilient seat (-30°F TO 250°F)
- 530N/530S - VITON seats (10°F TO 300°F)
- 540S - BUNA seats (10°F TO 250°F)
- API609 face to face flange
- Floating dual shaft disc design
- MSS SP 67 compliant
- No pins in disc prevent potential leak points
- NSF/ANSI 61, 372 approved

### PRESSURE - TEMPERATURE CHART FOR SERIES N500N/N500S

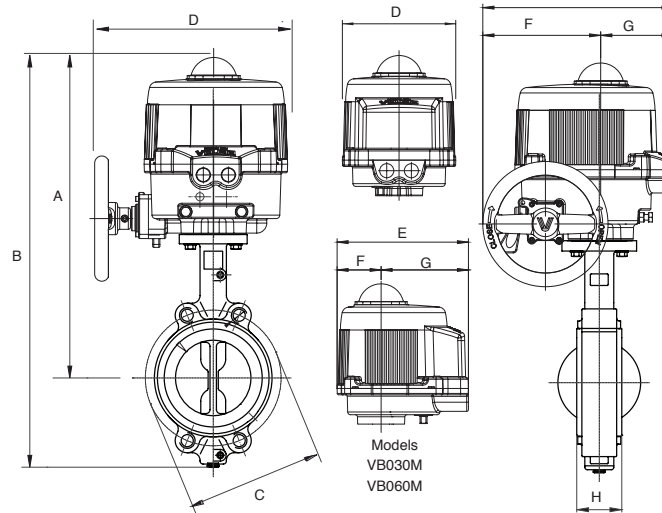


## BILL OF MATERIALS



N POS	PART NAME	MODEL	MATERIAL	N PCS
1	BODY		CAST IRON	1
2	SEAT	N500N/N500S	EPDM (-30°F TO 250°F)	1
		530N/530S	VITON (10°F TO 300°F)	
		540S	BUNA (10°F TO 250°F)	
3	LOWER SHAFT		SS416	1
4	DISC 500N		CAST IRON / NYLON 11 COATED	1
	DISC 500S		STAINLESS STEEL	
5	UPPER SHAFT		SS416	1
6	LOCATING PIN		CARBON STEEL	1
7	BUSHING		P.T.F.E.	1
8	O-RING		EPDM	1
9	LEVER		EPOXY-COATED CARBON STEEL	1

## DIMENSIONS

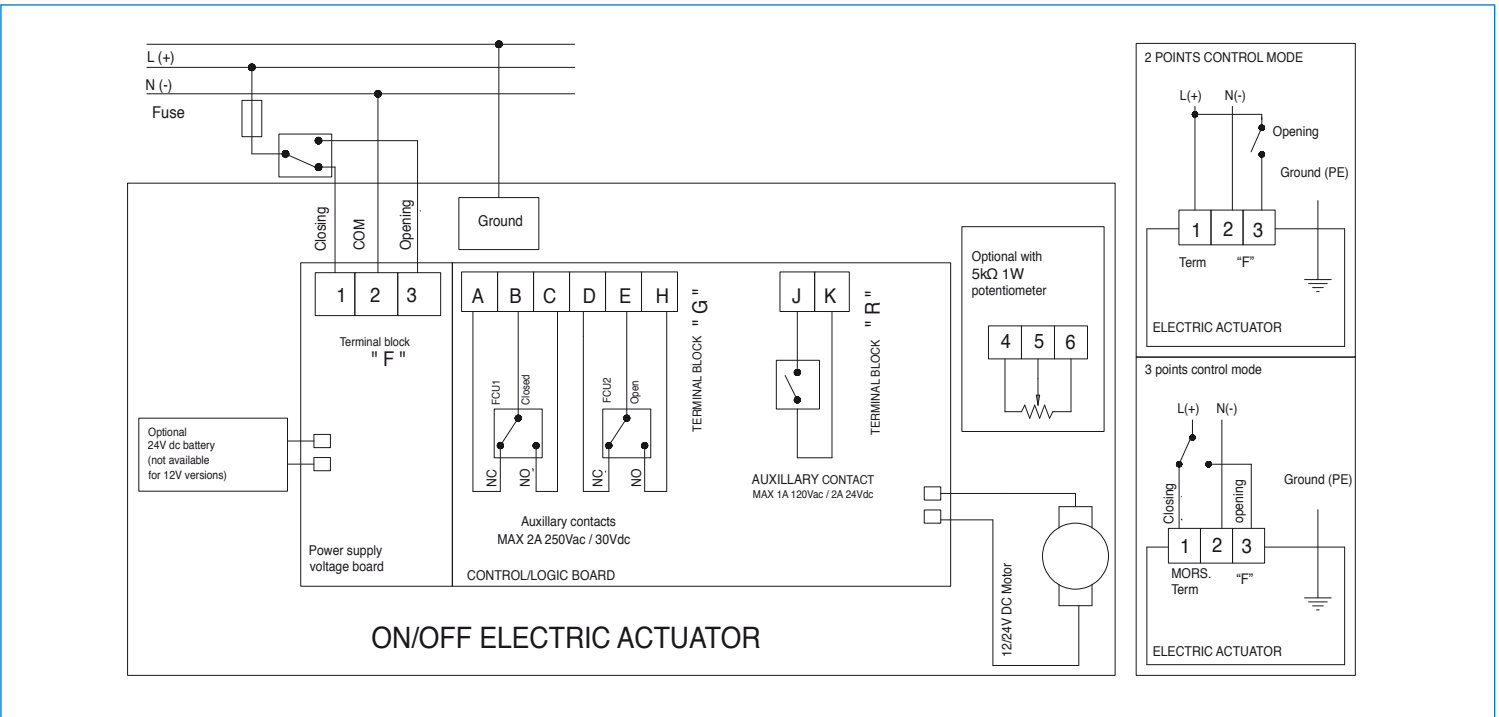


Size	A	B	C	D	E	F	G	H	Act.
1-1/2" *	13.54	16.51	4.74	6.34	7.36	2.48	4.88	1.61	VB030M
2"	14.17	17.32	4.74	6.34	7.36	2.48	4.88	1.65	VB030M
2-1/2"	14.72	18.22	5.49	6.34	7.36	2.48	4.88	1.76	VB030M
3"	14.96	18.70	6.00	6.34	7.36	2.48	4.88	1.78	VB030M
4"	16.53	21.02	7.50	6.93	7.76	2.48	5.28	2.05	VB060M
5"	18.02	23.02	8.50	10.63	10.47	6.50	3.98	2.14	VB110M
6"	18.58	24.05	9.50	10.63	10.47	6.50	3.98	2.20	VB190M
8"	19.96	26.85	11.75	10.83	10.98	7.24	3.74	2.34	VB270M
10"	21.22	29.21	14.25	10.83	10.98	7.24	3.74	2.58	VB350M
12" **	CONSULT FACTORY								

\* - available on MEN500S only

# ON/OFF WIRING DIAGRAM - VB030M -VB350M

12V AC/DC, 24V AC/DC & 100-240VAC



# POSITIONER WIRING DIAGRAM - VB030M -VB350M

12V AC/DC, 24V AC/DC & 100-240VAC

